



## CHAIRMAN'S UPDATE: CURATORS CORNER, MEMBER SURVEY & EVENTS

Time has not passed slowly in Friends HQ since I last wrote. What may usually seem like a somewhat dormant period in the lead up to Spring has been anything but. We have much news to share, with more information to be found in these pages.

We are delighted to introduce a members-only opportunity called "Curators Corner" where Friends can meet Curator Nikki in the Museum environment as she explains the story behind a chosen artefact. More information is on Page 4.

We will also be starting a Refer-a-Friend membership offer which rather speaks for itself. More details from our Membership Secretary, Sean Hannan, on Page 7.

We are pleased to advise that this year's annual excursion will be a Curator-led tour of Amberley Chalk Pits on Wednesday 3rd June. Many Friends will already know the details via e-mailed Newsbriefs, but for those who rely on the newsletter see Page 3.

We initiated our first on-line members survey at the start of the year requesting your views about our event strategy. What did the results tell us? See the details on Page 8.

You will also see an advertisement to find a new Honorary Secretary starting April 2027. Our current Secretary, Ann Rattray, will be standing down after the AGM next year and has helpfully given us maximum notice to find a replacement. E-mail or call if you are interested; we really would love to hear from you.

In the meantime, our 2026 programme of talks has commenced with Ian Gledhill giving an absorbing presentation about the highly photogenic, but ultimately doomed, Crystal Palace. On Wednesday 15th April we will have our AGM, followed by Assistant Curator George telling the story of our favourite dinosaur, the Horshamosaurus. Then on Wednesday 10th June, we have been very fortunate to secure John Hilary who will describe the Messel family, their time at Nymans and their relationship with Sussex.

The 2027 Events programme is firming up nicely and will feature another diverse assortment of speakers

and subjects. Currently we are allocating dates to names.

We continue to collect large donations on behalf of the Museum and, since I last wrote, we have received £300 from Alf Shrubbs Races. This was to reflect their gratitude for the loan of Alf's famous running shoes which were displayed at their annual Memorial race last year.



Alfred Shrubbs running

Separately, I would like to publicly thank Rick Domas for representing the Friends so capably in a project organised by our colleagues, the Friends of Horsham Park. Rick has contributed a detailed piece for inclusion in a forthcoming book about the history of the Park which celebrates its centenary in 2027//28. Like the Museum, the Park is another asset of the town which is proudly treasured within the District.



Horsham Park

Finally, I hope that many of you will have visited the Museum's current exhibition - "Cabinets of Curiosity: Museums Past, Present and Future." Well laid-out, informative and featuring some unusual and unexpected artefacts, it represents another successful initiative by Nikki and her team to stimulate the interest of the town and its community.

So, there's a lot happening, which is exactly how it should be in a lively and pro-active organisation.

Till next time

*Paul French*

## MUSEUM NEWS



Daffodils in the museum garden

The museum garden has already experienced its first colourful blooms of Spring with snowdrops, daffodils, crocuses and hellebores (amongst others) appearing in the garden's beds. After the quieter winter months this always signals the start of our busy season.

This spring and summer we will continue to hold family craft activities during the school holidays and half term, and the Museum Late events will be returning. There will be one less Late this year as we have planned repairs for September to the museum's roof, but the events will be taking place on Friday 19 June, Friday 24 July and Friday 21 August. The acts that will be playing are almost confirmed so I should be able to share these details soon, but I am very excited about this year's line-up.

Although the roof project in the autumn might mean that we are unable to stage all the events that we normally would, we have been planning future exhibitions for once the roof has been repaired.

In the Spring of 2027, we will be hosting an exhibition of portraits by Sussex artist Mariusz Kaldowski. He will be creating the series of artworks in 2026, and we are asking for volunteers who may be interested in becoming a 'model' for a portrait. If you think this may be something that you would like to take part in, then please email the museum ([museum@horsham.gov.uk](mailto:museum@horsham.gov.uk)). There is also a blog post on the museum's website which gives more details of the project.

I hope to welcome you all to the museum in the coming months whether that is stopping by for one of our events or just popping in to enjoy the garden on a sunny day. As well as our permanent galleries, the Cabinet of Curiosity exhibition is open until Saturday 9 May and we will be open all days across bank holiday weekends, including Sunday and Mondays.



A portrait by Mariusz Kaldowski

*Nikki Caxton*

## EARLY NOTICE VACANCY: HONORARY SECRETARY

Our current Honorary Secretary, Ann Rattray, has indicated that she will be standing down after the A.G.M. of 2027. Clearly this is a very responsible position within the Committee, but Ann's early advice should allow time to settle in a replacement with the opportunity of a long period of familiarisation.

It is preferable that the position is filled by a candidate within the Friends as that would give the advantage of some knowledge of our organisation with the potential to learn, and get involved in, much more.

Whilst there is a job description, it is largely fulfilled by secretarial duties such as admin support, minute taking, agenda compilation and

A.G.M management. There is also a requirement to attend a weekday monthly Committee meeting for a duration of 90 minutes.

We would like to identify our new candidate early so that he/she can attend Committee meetings in a trainee/Assistant Secretary capacity until Ann stands down.

If you are interested, then please e-mail via [fhmag1893@gmail.com](mailto:fhmag1893@gmail.com) or phone Paul French on 07936 729678.

If we cannot find a suitable candidate within the Friends, then the vacancy will be circulated via the Horsham District Volunteer website to determine any external interest.

# FRIENDS 2026 EXCURSION: GUIDED TOUR OF AMBERLEY CHALK PITS

**Event date: Wednesday 3rd June 2026**

Please join us for an unusual tour of Amberley Chalk Pits led by the Curator of Amberley Museum.

Once there, we will learn about the history of the working chalk quarry during its productive life and development from the 1840's to 1960's. We will also find out more about the experiences of the workers at the site and get up close to some of the original buildings and equipment used in the past.

Please look at the two attached links for more background on this unique establishment.

<https://www.amberleymuseum.co.uk/limeburning-at-amberley/>

<https://www.amberleymuseum.co.uk/explore/explore-industry/chalk-pits/>

The cost of this visit will be approx. £30 which includes a post-tour hot drink and cake in the cafe. The tour will start at 11.30, so participants will need to assemble at 11.15.

At this stage, it is proposed that Friends make their own way to Amberley, and maybe provide lifts to those who want to attend but are unable to drive. Ample parking is available at the Museum. There is also a rail option by using the adjacent Amberley station. There could be a dedicated bus option at



an additional cost but we need to identify numbers first.

We will be asking all those that have expressed an interest for a £10 deposit soon.

Details of this trip have already been circulated via e-mailed Newsbriefs. If you wish to attend then please contact [fmag1893@gmail.com](mailto:fmag1893@gmail.com) or telephone 07936 729678. Please also advise if you can offer a lift or need a lift on the day

I do hope that many of you will be able to join us

*Paul French*

## COMING SOON: 16TH ANNUAL GENERAL MEETING: THE FRIENDS OF HORSHAM MUSEUM & ART GALLERY

**Event date: Wednesday 15th April 2026, 7.30 pm**

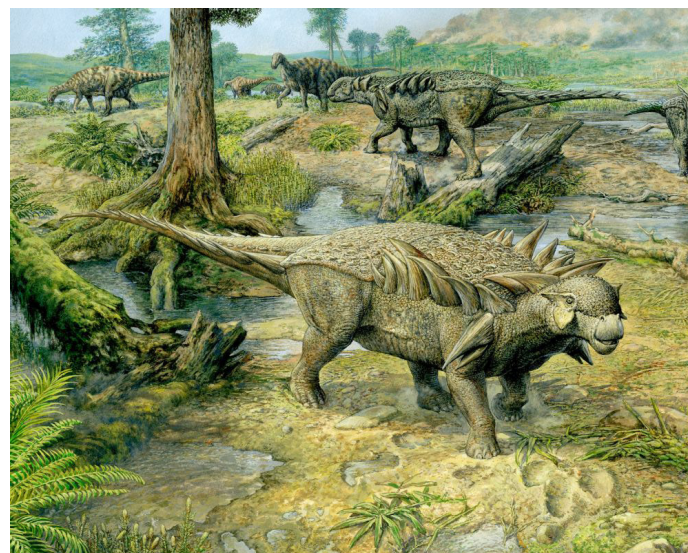
You are invited to attend this event which will be held in the Wesley Hall, Cornerstone Methodist Church, London Road.

Following the AGM, we will be joined by Horsham Museum's Assistant Curator, George Graham-Payne, who will give a presentation on "The Horshamosaurus".

We look forward to welcoming George on this key date in our diary, and it is hoped that many members will come and discover how Horsham's own dinosaur evolved.

Members: free

Guests: admission £5 cash only.



*Paul French*

## COMING SOON: JOHN HILARY PRESENTS THE MESSEL FAMILY OF NYMANS; BECOMING ENGLISH GENTRY IN WEST SUSSEX

Come and join us on Wednesday 10<sup>th</sup> June 2026 at 19.30 in Wesley Hall at the London Road Chapel and meet John Hilary, the author and academic, whose book “From Refugees to Royalty - The remarkable story of the Messel family of Nymans” will form the basis of this evening’s talk.

John pursued a career in the non-governmental sector, rising to become Executive Director of the charity War on Want before moving on to work in Parliament. He is an Honorary Professor in the School of Politics and International Relations at the University of Nottingham and is one of the Messel family representatives on the National Trust advisory board for Nymans.

John’s reputation as an acclaimed authority on the Messel family is assured, so please do join us if you can.

Admission to all: £7.50 including refreshments



John Hilary in the Garden

*Paul French*

## NEW OF 2026 - CURATOR’S CORNER

The Friends are delighted to introduce a new, members only, initiative into our programme of events this year.

Following discussions with Nikki Caxton (our Curator) we would like to invite you to ‘Curator’s Corner’, an opportunity for a small group of members to meet Nikki who will choose an object in the Museum’s collection and talk not only about the object itself, but also about its place in history. Each event will last approximately 45 minutes, allowing for a question and answer session at the end.

We will be able to have a maximum of 15 members at each event and topics will be varied throughout the year. Attendance is by advance booking only please and is on a first come first serve basis but is FREE to our membership.

Our first Curator’s Corner will take place on Saturday 11 April at 11am in the library at Horsham Museum and will feature tales and objects relating to the Knights Templar based in Shipley in the 12th century. You will be able to get up close to a piece of 12th century hacksilver as well as explore some of the legends surrounding these famous Knights.

If you would like to come to our first ever Curator’s Corner please let us know by emailing [fhmag1893@gmail.com](mailto:fhmag1893@gmail.com), complete the contact

form on our website [friendsofhorshammuseum.co.uk/contact/](http://friendsofhorshammuseum.co.uk/contact/), telephone the museum (01403 254959) or call in to the museum to let your interest be known.

Look out for advance invitations to future sessions of Curator’s Corner on our website, by email or on our social media sites.

We hope that this will prove to be a popular addition to our curriculum and look forward to your company.

*Pam French*



## CRYSTAL PALACE TALK BY IAN GLEDHILL

It's quite possible that some people attending Ian Gledhill's talk in February on Crystal Palace (such as myself) had only a basic knowledge of the building - it was built, it was popular and then it burned to the ground.

However, the real story we all discovered, at the Cornerstone Methodist Church, was far more complex and involved two Crystal Palaces!

The first was built in Hyde Park to house the Great Exhibition of 1851. Designed by Joseph Paxton, it was three times the size of St Paul's Cathedral. Various designs had been put forward but were rejected, including one by the executive building committee. Finally, renowned gardener Paxton (he had worked at Chatsworth) came up with an acceptable plan and work finally started.

Hundreds of thousands of panes of glass were placed within steel girders, and many concerns and technical problems were overcome to enable the Great Exhibition to be opened on May 1 1851 by Queen Victoria, whose husband had been a major supporter of the project. The range of exhibits was so great that the catalogue ran to 1,500 pages.

The Crystal Palace building (the name had been coined by Punch magazine) was a temporary building and in 1852 it was taken apart. However, against much opposition it was bought and transported to Sydenham. The opportunity was taken to make the building even bigger and more impressive.

This second version took two years to build and various people were hired to construct different areas (courts) showing off the history of art.

Concerts were hosted and other attractions were held, such as motor racing, a fun fair and dog



Ian Gledhill

shows.

However, it never made any money and in 1911 it was declared bankrupt. After the First World War, during which it was used as a naval training base, it was in a sorry state but was re-opened in 1920 as the site of the first Imperial War Museum. Under the guidance of manager Sir Henry Buckland, the Crystal Palace started to gain renewed interest from the public and held various events.

However, on November 30 1936 Sir Henry noticed a red glow coming from the building. The fire brigade was called out and, in the end, 89 fire engines tried to battle what was an overwhelming blaze. Within hours it was decimated, the fire being visible from the South Downs. All that remained were the water towers which were later demolished.

Today, a few signs are still to be seen, such as the base of a water tower and some statues but its legacy has been as one of London's most iconic buildings from the past.

*Steve Payne*

## ARTS SOCIETY - UPCOMING EVENTS

### Wednesday 8<sup>th</sup> April 2026

Cartoons and Contraptions: The wonderful world of W Heath Robinson

Speaker: Mr Barry Venning

### Wednesday 13<sup>th</sup> May 2026

Renaissance Cassoni : Wedding chests and the art of marriage in C15 Florence.

Speaker: Anna Warilow

### Wednesday 10<sup>th</sup> June 2026

London's Lost Department Stores

Speaker: Tessa Boase

### Wednesday 8<sup>th</sup> July 2026

George Villiers, Duke of Buckingham: the handsomest man in 17 century Europe and his patronage of the arts

Speaker: Lucy Hughes-Hallett.

All lectures take place at the Brighton Road Baptist Church at 10.45. Refreshments available from 10.00. Non-members £8 entrance on the door. No need to book.

[www.theartsociety.org/horsham](http://www.theartsociety.org/horsham)



## HORSHAM'S LOAN EXHIBITION

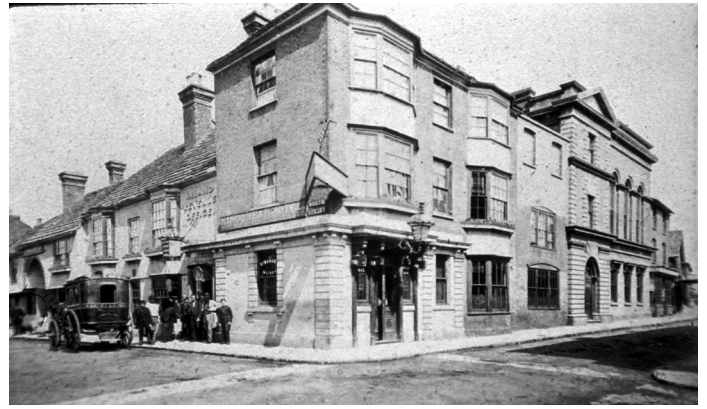
One of the challenges in writing a history of the Horsham Museum Society is you can get sidetracked quite easily! There is so much fascinating history waiting to be uncovered. However, sometimes you can hit upon a real nugget of gold that is actually relevant to the Museum's history and Horsham's Loan Exhibition of 1864 is a perfect example!

This was exactly as it sounds. A group of men and women organised a viewing of nearly 1,000 artefacts on loan from 'stately homes' and private collections around the Horsham district. The venue was the Assembly Rooms at the Kings Head Hotel and the public were charged 6d entry on most days. There was also musical entertainment available on a couple of evenings when evening dress was insisted upon and a fee of 2s 6d charged.

After a great deal of work by a committee formed for the purpose, the exhibition was arranged for January 1-15 1864. A reporter from the local paper had a look round when it opened and was very impressed! He wrote that in the committee's attempt to gather as many objects of interest '*the promoters have been eminently successful*'.

He also believed that there would be '*undoubtedly a considerable balance... to be devoted to the comfort of the poorer classes during the dead season of the year when work is scarce*'.

As to the exhibition itself, dozens of people lent all manner of artefacts, such as paintings, busts, coins, jewellery, stuffed birds and animals, china, antiques, curiosities and miscellaneous



The Kings Head Hotel in Horsham, venue for the 1864 Loans Exhibition

manufactured objects.

Among the paintings were works by notable artists such as Sir Joshua Reynolds, Velasquez and Rembrandt. Other items of interest included a sword from the Battle of Culloden, an alligator's egg, enamelled gold snuff box set with diamonds and a small silver tea service.

Several thousand people came to the exhibition and a report at its conclusion stated that '*the memory of it will live with us for years*'.

That was certainly the case, as decades later Museum Society member and local historian William Albery mentioned it when he was helping Horsham Museum's move to a new site in Park House and it's not unreasonable to suggest that others had it in mind when the Museum was first considered in 1893!

Steve Payne

## ADOPT AN ARTEFACT

A quick reminder of one of the fascinating brand new objects available for adoption. Find out how to take part at [friendsofhorshammuseum.co.uk/adopt-an-object](http://friendsofhorshammuseum.co.uk/adopt-an-object).

### NEW Goat cart

This cart from 1904 would have been used for a goat to pull a small child along. Although not impossible, it is unlikely that it was designed for a dog to pull. Dog carts were banned in Britain in 1841, as before that they had been used quite widely, particularly for local deliveries like milk. The act was opposed quite heavily as dogs were cheaper to own than the types of livestock allowed to be used after the act was passed.



Pam French

## OUR NEW REFER A FRIEND SCHEME

This new member's only scheme is part of our ambition to strengthen the Friends of Horsham Museum and Art Gallery, both as a supportive community and as a source of funds and inspiration for the museum.

When you refer a friend who becomes a member, you will receive one free invitation to an event of your choice.\* This excludes outings and any 'special events' which we may organise.

All you have to do is encourage a friend to join the Friends. When they apply, they name you as their referrer and, once their membership is confirmed,

we send you your free invitation. This is valid for 12 months from the date your friend joins.

So why not take the opportunity to introduce new people to our events, promote the benefits of being a member - and enjoy a free event as a thank you.

Just ask your friend to mention your name when they join. It's that easy!

\* We are limiting members to 3 rewards in any membership year.

Sean Hannan

### Museum Discount Scheme

From 1st April 2026, your 10% discount can be used for all purchases \* from the Museum Shop.

Always show your Friends of Horsham Museum Membership Card

*\* Excludes 3rd party sales*



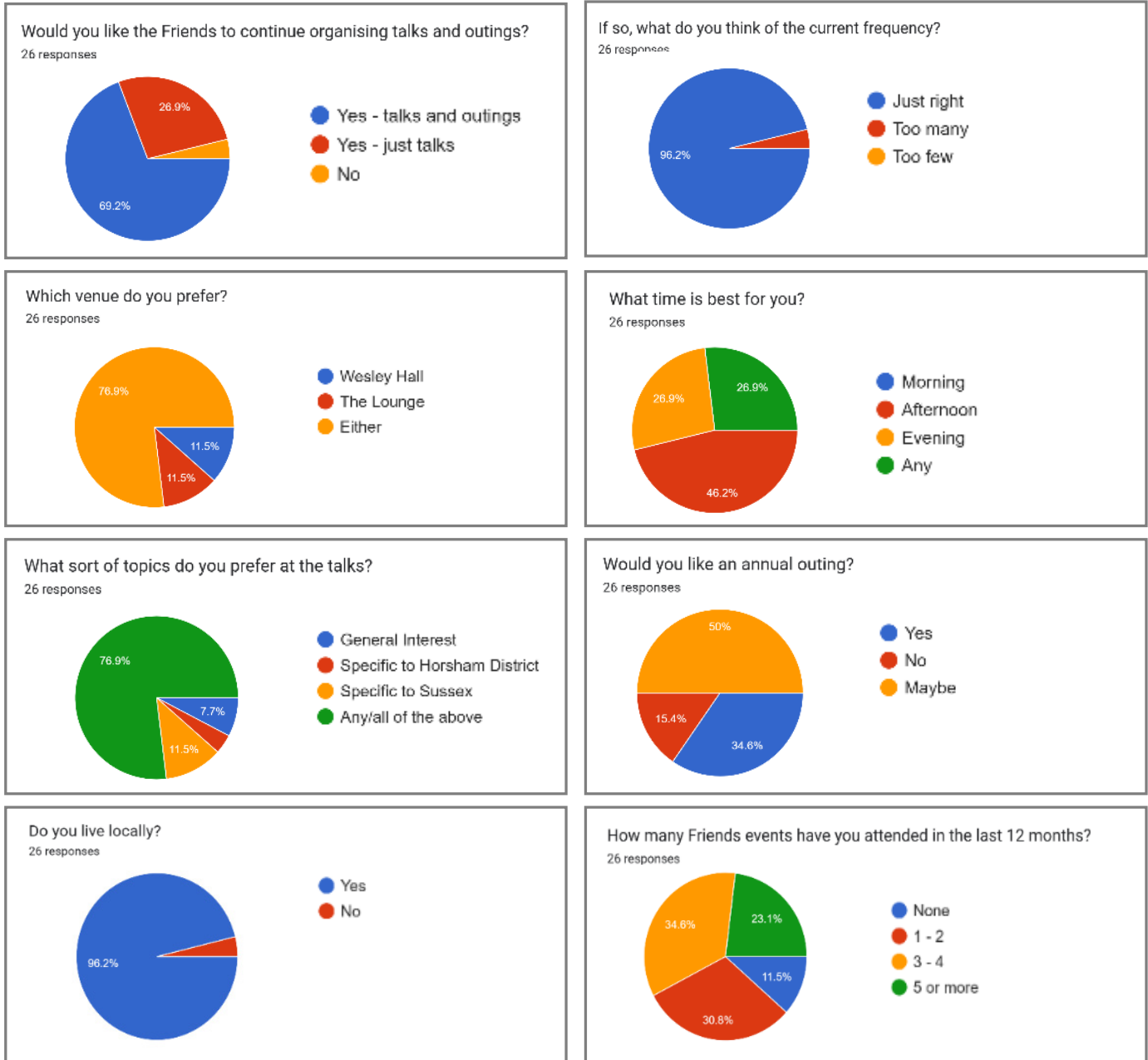
### NEW FHM MEMBERS

We are pleased to welcome new members this year: Pamela Kimber, Rhona Gregson, Sue Hardy, and Sue and Peter van der Borgh.



# FRIENDS SURVEY RESULTS

Thank you to all our members who responded to our recent event survey. I am showing the results below. Once your committee has had an opportunity to discuss this feedback in detail we will let you know if these responses will result in any changes to our future event programmes.



Thank you also to those members who added a personal comment. We are delighted that most of our members seem to be well satisfied with the work that we are doing on their behalf. Where we have received constructive comments or suggestions we will look to see if they can be incorporated going forward.

*Pam French*

## GARDEN UPDATE

---

As we returned to the garden after the winter, we were welcomed with a blanket of purple Tommasinianus Crocuses and Snowdrops. Also, there were Primroses and Winter Pansies which were planted just before the winter break.

We spent the first few weeks clearing up after the winter and cutting back the Ferns, removing Allium Triquetrum which have rapidly spread around the garden as well as weeding (always needed whatever the time of year!).



The Lemon Verbena (*Aloysia citrodora*) by the entrance to the garden has been pruned to bring it under control.

We have been very lucky with the weather with some lovely spring mornings and have already seen some bees buzzing around especially around Rosemary. One of our volunteers came across our first toad in the garden.

In just the first few weeks the garden has been changing and with the end of Crocuses they are quickly being followed by the flowering of the Daffodils. We have various varieties, mostly Tête-à-tête. We spotted a few Shamrock plants.

Our Quince is looking pretty, with white blossom.

It will only be a few more weeks, and everything will burst into life. The Camelia is ready to flower, and buds are appearing on the Hibiscus and shoots on the Roses. Tulips have been planted in pots around the garden, some of the varieties include Cream Cocktail, Fire Wings, Akebono and Ice Stick. We're looking forward to seeing them all in flower!

Come and visit the garden regularly and enjoy the everchanging scenery.

---

*Lucy Stevens*



# HISTORIC ENTRIES IN THE WEST SUSSEX COUNTY TIMES

WSCT Saturday, November 28th 1914

## SUDDEN DEATH AT HORSHAM MR ALFRED POTTER

### THE INQUEST

On Monday evening, Mr. F. W. Butler, Coroner for the district, held an inquest at the Wesley Hall on the body of Alfred Potter, aged 43, a confectioner and greengrocer, of 77, London Road, who died with tragic suddenness soon after one o'clock on Saturday at 78 Trafalgar Road. Mr. J. Coles was foreman of the Jury.

Mr. Joseph Garner, of 7, West Parade, solicitor's clerk, identified the body as that of Alfred Potter, his sister's husband, of 77 London Road. His general state of health had been quite good, but a couple of years ago he was seen by a doctor for night sweating. He had carried on his business almost daily.

Mr. A. W. Glanville, draper, of 78, Trafalgar Road, said deceased was in the habit of calling for orders every Saturday, as he served witness with vegetables. On Saturday he came about ten minutes past one and sat on a chair, as usual. He began to talk about the Congregational Church, but had not been seated two or three minutes before he put his hand towards his head and complained of giddiness. Before witness could realise that anything serious was going to happen deceased fell to the floor in a heap. He appeared to have trouble with his throat, having difficulty in breathing. Witness got him out as straight as he could and proceeded to loosen his neckwear. Deceased did not speak again. As soon as deceased fell, witness



Potter's greengrocers and confectioner

sent his young lady assistant on a bicycle for Dr. Kinneir, who arrived in a very short time. Deceased had seemed very cold and appeared very glad to get inside the shop. He looked as though the cold had got hold of him. His manner was bright enough.

Mr. F. W. E. Kinneir said he received an urgent message at about a quarter past one and was at the shop in a few minutes and had that morning made a post-mortem examination. The heart was enormously hypertrophied and weighed over sixteen ounces instead of the normal eight ounces. The aortic valves were extensively diseased and calcareous, rendering them quite incompetent; the other organs were healthy.

The doctor remarked that it was rather unfortunate that deceased had not seen a doctor. The condition of the heart would have been found out at once and he might have gone on for years.

## LETTERS TO THE EDITOR

We are always delighted to hear from our members about any subject that appears in our newsletter, on our website or regarding any matters of general local interest.

Please contact us via [fhmag1893@gmail.com](mailto:fhmag1893@gmail.com).



## SAMUEL CARPENTER AND THE FOUNDING OF HORSHAM, PENNSYLVANIA, USA (PART 1)

---

Many of you may have heard of Horsham, Pennsylvania (PA), in the USA. You might have seen the signs, for Horsham, PA when driving around the Philadelphia area for work, attending a convention or on holiday. Most of us know Philadelphia for the Independence Hall, the Declaration of Independence, the Liberty Bell, and the Rocky statue at the Philadelphia Museum of Art. You are also likely know about William Penn's links to the Blue Idol at Coolham, near Horsham, West Sussex. William Penn founded his namesake state of Pennsylvania. A further local link was Thomas Paine, who spent time in Lewes, East Sussex. He arrived in Philadelphia in November 1774, sent by Benjamin Franklin to become the editor of The Pennsylvania Magazine. What you might not know, is that Horsham, PA was actually founded by a native son of Horsham, Sussex, Samuel Carpenter. Carpenter became Deputy Governor of colonial Pennsylvania, under William Penn.

We know that Samuel Carpenter was born in Horsham. The records of St Mary's Parish Church show that Samuel was born in Horsham on November 4th 1649 and christened at the church on December 20 1649. He was the son of John Carpenter and his second wife Sarah. There are also various genealogies from the 1900s, that claim that John Carpenter was "Sheriff of Horsham", a likely embellishment by an English genealogist for an American client. Brian Slyfield wrote an extensive and thorough article on the Horsham, Sussex roots of the Carpenters back in 2003.

John Carpenter died in Horsham in August 1671, when Samuel was 22. Samuel left Horsham soon afterwards accompanied by his two half brothers, Joshua and Abraham and his share of the patrimony. He and his brothers decided to seek their fortune in the New World, in this case the Caribbean. We know that Samuel was in Barbados a couple of years later, because he was fined there in 1673 and again 1683 for failing to furnish men in arms. Making war and providing soldiers was against Quaker beliefs and apparently Samuel had previously converted to Quakerism.

Quakerism (The Friends) was present in Horsham, Sussex as early as 1655. There seems to be no existing record of Samuel joining The Friends, but he did do so before leaving England.

One of the more prominent Quakers was William Penn, whose home was at Warminghurst, near



Samuel Carpenter courtesy of the Horsham Historical Society, Pennsylvania

Pulborough, Horsham, Sussex. His farmhouse was in Oldhouse Lane, and was four miles from the Blue Idol at Coolham, the meeting house of the local Quakers. Penn helped establish the meeting house at the farmhouse, called the Blue Idol. It served as a key centre for local Quakers, many of whom later emigrated to North America. Penn's father was the Admiral and politician Sir William Penn to whom King Charles II was indebted £16,000. To offset the debt, the King granted the Admiral, an area of land in America, corresponding to present day Pennsylvania and Delaware.

*This is part 1 of 3 sections from this interesting article. Look out for parts 2 and 3 in future issues.*

*My thanks to the HPHA, The Horsham Preservation Historical Association especially to editor Kevin Winters. They have given me access to numerous documents relating to William Penn, Samuel Carpenter and his family and the settlement of Horsham Township in Pennsylvania.*

---

Maureen Radbourne

## FORTHCOMING EXHIBITIONS & EVENTS

All Friends Events will be held at the Cornerstone Methodist Church, London Road, Horsham.



**Museum exhibition | Cabinet of Curiosity - Museums Past, Present & Future**

*Saturday 31 January - Saturday 9 May 2026*

**Museum Easter Egg Trail**

*Tuesday 24 March - Wednesday 8 April | 10am-4pm*

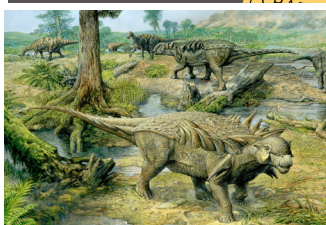


**Museum Easter crafts**

*Tuesday 31 March - Friday 10 April | 10.30am-3pm*

**Museum and Friends Joint Event | Curators Corner**

*Saturday 11 April | 11 am | Museum Library | Members only upon application*



**Friends events | AGM & George Graham-Payne: The Horshamosaurus**

*Wednesday 15 April | 7.30pm*

**Friends events | Curator-led tour of Amberley Chalk pits**

*Wednesday 3 June | Assemble 11.15 for 11.30 a.m. start*



**Friends events | Dr. John Hilary: Nymans and the Messel Family**

*Wednesday 10 June | 7.30pm*

**Friends events | Jeff Thomas: The Story of Daisy (Restoring a 1930's tandem bicycle)**

*Wednesday 29 July | 2pm*



**Friends events | Dr. Alexandra Loske: Turner and Constable in Sussex**

*Wednesday 23 September | 7.30pm*

**Friends events | Rick Domas: Oil Paintings within the Museum collection**

*Wednesday 28 October | 2pm*



**Friends events | Simon Mott: Mantovani - What Makes a Superstar**

*Wednesday 2 December | 2pm*

## FHM COMMITTEE

**Chairman:** Paul French | **Secretary:** Ann Rattray | **Treasurer:** Brian Frogley

**Other Members:** Pam French, Audrey Coventry, Steve Payne, Sean Hannan, Patricia Barrett

**Newsletter Editor:** Gail Chapman

**Contact email:** [fhmag1893@gmail.com](mailto:fhmag1893@gmail.com) | **Friends website:** [www.friendsofhorshammuseum.co.uk](http://www.friendsofhorshammuseum.co.uk)

**Contact address:** Horsham Museum, 9 Causeway, Horsham, West Sussex, RH12 1HE

You can support Horsham Museum & Art Gallery by making cash or card donations, Adopting an Object, joining the Horsham District Council lottery, registering with [www.easyfundraising.org.uk](http://www.easyfundraising.org.uk) to do your shopping or by leaving a gift in your will.

[www.horshammuseum.org](http://www.horshammuseum.org)

Friends of Horsham Museum & Art Gallery is a Registered Charity, No: 1138172